

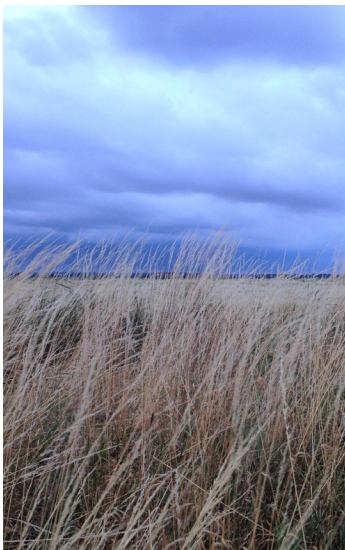
// SUSTAINABILITY

VISION

“

We strive to produce furniture that supports environmentally friendly consumption.

”



At Bent Hansen we are against the throw-away society. We have a critical view of overconsumption and excessive production of short-lived or disposable items. Focusing on minimizing our environmental impact, we are committed to improving our business practices to continuously achieving a higher level of sustainability.

Our sustainability policy is underpinned by the following guiding principles:

- **Design philosophy** // We only bring furniture to the market, we feel has a true *raison d'être*; designs that are not part of a temporary trend but have the potential of becoming timeless classics.
- **Materials** // We use high quality materials that last for decades and reduce the need to buy new furniture.
- **Sales policy** // We practice stable, annual pricing instead of launching frequent, seasonal sales and campaigns encouraging overconsumption.
- **Suppliers** // We carefully select suppliers that have a responsible approach to their production. Our suppliers are focusing on minimizing their environmental impact. They have the capacity to solve multiple parts of the manufacturing process in-house and thereby reduce CO2 load associated with transport. All our furniture is manufactured in Europe.
- **Leather** // On all upholstered furniture, Bent Hansen offers a standard semi aniline leather that has been rewarded with “The Blue Angel” label that certifies the leather’s eco-friendly quality.
- **Textiles** // The majority of the standard textiles listed on Bent Hansen’s price list are rapidly renewable and compostable and hold the EU ecolabel “The Flower”.
- **Paper & Carboard** // All paper and cardboard waste from the administration at Bent Hansen are recycled.